

ModuPRO[®] Endo Instructions

Thank you for purchasing the ModuPRO Endo. You now have the finest model designed to simulate various endo procedures outside of a human patient.

Your ModuPRO Endo comes with a high-quality aluminum adjustable articulator for attachment to a standard post. If mounting to a common simulation system, simply remove the four screws attaching the articulator to the upper and lower Carrier Trays.

Please refer to the apex locator guidelines if you are using the model with an electronic apex locator (optional).

Mounting Teeth in an Endo Module/Sextant

Each endo module has a socket designed to accommodate one natural tooth no more than 25mm in length. The socket should be clean and dry before mounting the tooth. No materials other than Apex Putty[™] and Fixing Gel[™] should be used when mounting a tooth in the socket. The endo module is a disposable item and the tooth cannot be removed once mounted. Follow the instructions below for proper tooth placement.



Fig. 1

To help lock the tooth in the Fixing Gel, using a round bur, cut a horizontal notch in the coronal third of the tooth root on the facial and lingual surface. Do not enter the root canal space. **After notching, be sure the tooth is clean and dry before mounting in the module.**



Fig. 5

Before use, bleed the syringe to ensure even extrusion of both materials and then attach the Mixing Tip.

Fill the entire socket around the tooth with Fixing Gel to cover the entire tooth's root surface to the CEJ referencing the illustration to the right. (The Fixing Gel is somewhat viscous so the flow can be controlled.)

Allow the Fixing Gel to set approx 30 minutes (full strength in 24 hours).

An extra Mixing Tip is included with each syringe because the Fixing Gel sets-up inside the tip if time elapses between mounting. Keep the Fixing Gel syringe stored at room temperature when not in use.

Note: Mounted teeth should be stored in an air tight bag or container with moist cloth or gauze to help prevent tooth fracture during treatment.



Fig. 2

Use only Apex Putty.



Fig. 3

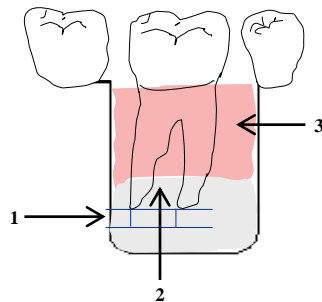
Place the Apex Putty in the bottom of the socket. See illustration and instructions below for determining the amount of Apex Putty necessary.



Fig. 4

Place the tooth in the Apex Putty and align with the occlusal plane of the adjacent artificial tooth. **Ensure the Apex Putty is in compliance with the illustration and instructions below.**

Illustration—Apex Putty and Fixing Gel Placement (Buccal Lingual View)



1. Apex Putty should be at least 2 mm in depth beyond all root apices.
2. Apex Putty should extend up the sides of the root (s) approximately 1/4 of the distance from the root apex to the CEJ, but no more.
3. Fixing Gel should cover the Apex Putty and the remaining space in the socket to the CEJ.

All items can be purchased separately, including Fixing Gel, Apex Putty and individual endo modules from www.acadental.com.

Taking Radiographs with the Opti-X[™] w/sphere

A 2mm sphere is conveniently placed in the Opti-X for an easy reference. It is also required for some board examinations when using digital x-rays (please see board manual).

Place the film on the underside of the Opti-X as depicted in figure 1 and place the endo module in the desired location to achieve the angle you want (see MD illustrations).

Note: a digital x-ray sensor can also be used with the Opti-X by placing the Opti-X on top of the sensor.

Place the module on its side by aligning so the tooth to be x-rayed faces the center of the x-ray head. A small magnet is conveniently located on the side of the Opti-X to allow stability of the endo module in the mesial-distal (MD) angle.

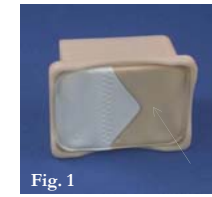


Fig. 1

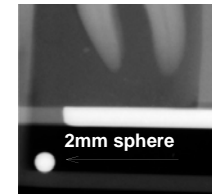
Film Placement



(MD)
Central,
Lateral or
Cuspid



(MD)
Premolar/
Molar



2mm sphere

Using an Apex Locator with the Carrier Trays[™]

⇒ **Note: You must have the ModuPRO Endo with apex locator ability and apex locator loops installed in the Carrier Tray in order to use with an electronic apex locator (EAL).**

⇒ Place a drop of water on the magnet to ensure conductivity. Dry when finished.

⇒ If the apex locator loop was not pre-installed, install the apex locator loop in the hole located on the maxillary left and mandibular right side of the Carrier Tray. Proceed by attaching the apex locator lip clip to the loop.

Guidelines when using an Apex Locator

⇒ Ensure all pulp tissue has been removed from the canal.

⇒ If a lateral canal is present, dry the liquid below the canal.

⇒ If there is a reading in the cervical area, you may have cervical leakage, a cervical lateral canal or a cervical perforation. Dry it with air and paper point.

⇒ Make certain the loop and lip are in contact to ensure electrical continuity.

⇒ A smaller file in a large canal may give you an erratic reading.

⇒ Repeated use with the same tooth for too long may enlarge the foramen and create inaccurate readings.

⇒ Other causes for inaccurate readings: hidden fracture in the root, canal obstructed by dentin shavings, canal calcification, open foramen or presence of large lateral canals.

ModuPRO[®] Endo

© 2010 Acadental. All rights reserved.

Manufactured under one or more
U.S. Patent Nos: 6,520,775; 6,988,894, 7,713,063
Other U.S. Patents Pending.

 **Acadental**
www.acadental.com

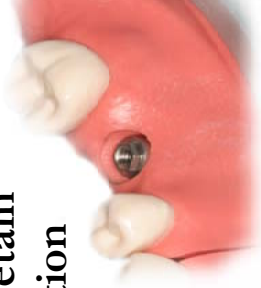
Rev. 082610

ModuPRO[®] Implant

**Practice implant and retain
for patient demonstration**

*For use with multiple vendors'
implant analogs to fit your
requirements and various
prosthodontic procedures.*

Only available with the ModuPRO.



ModuPRO[®] Endo Instructions

Opti-X[™]

**For fast and clear
radiograph results**



ModuPRO[®] Endo Instructions

Opti-X[™]

**For fast and clear
radiograph results**



ModuPRO[®] Implant

**Practice implant and retain
for patient demonstration**

*For use with multiple vendors'
implant analogs to fit your
requirements and various
prosthodontic procedures.*

Only available with the ModuPRO.

